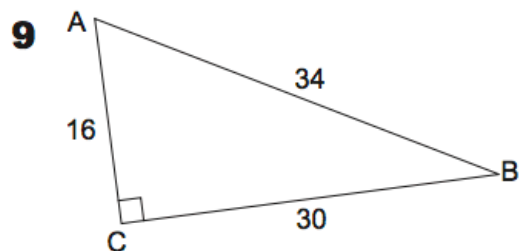
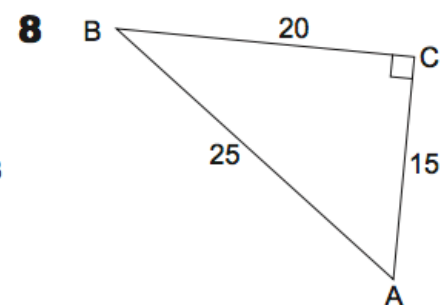
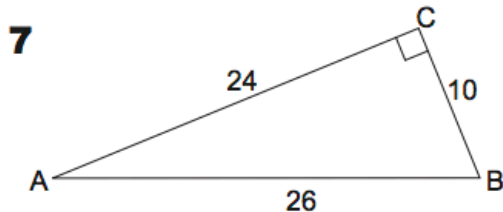
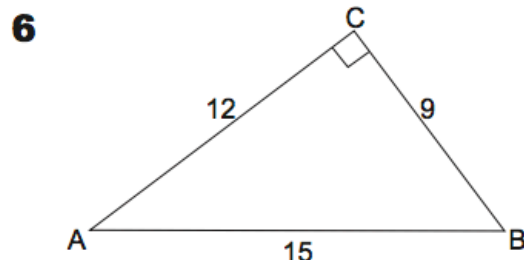
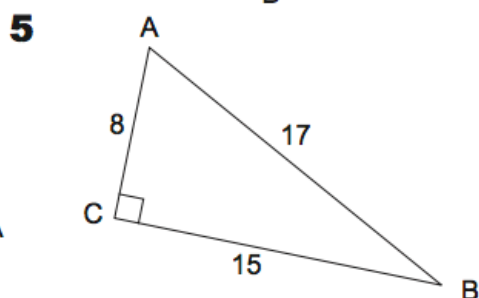
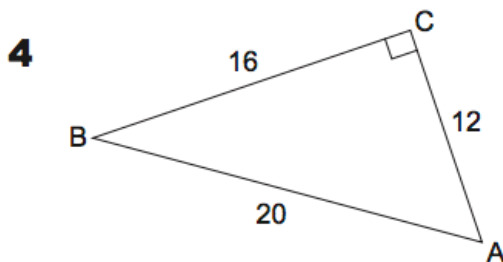
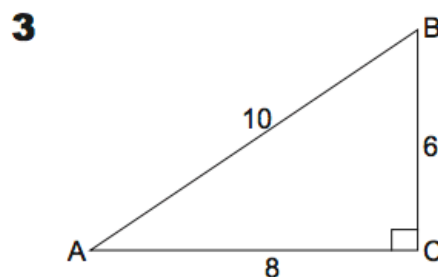
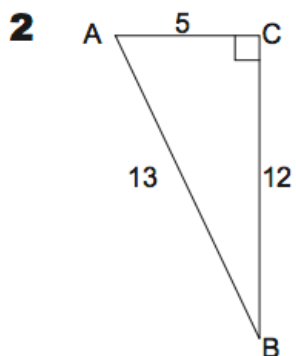
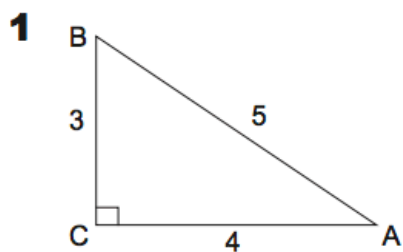


Classwork 4.24.19 Pythagorean Theorem Name: _____

For each of the following triangles, complete the table below and verify that the square on the hypotenuse is equal to the sum of the squares on the other two sides.



	<i>a</i>	<i>b</i>	<i>c</i>	<i>a</i> ²	<i>b</i> ²	<i>c</i> ²	<i>a</i> ² + <i>b</i> ²
1							
2							
3							
4							
5							
6							
7							
8							
9							