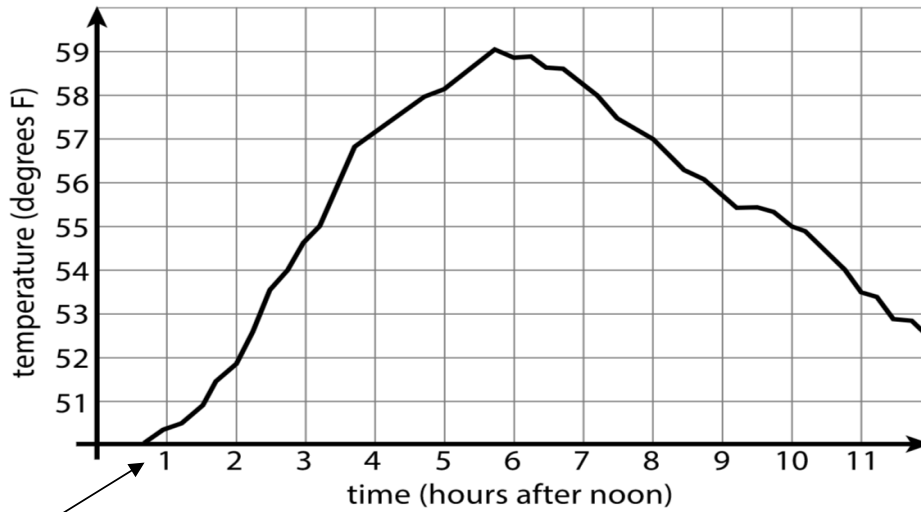


Problem 1 Issued: Thursday 1/30/20 Due: Monday 2/3/20

The graph shows the temperature between noon and midnight in City A on a certain day.



1:00pm

The table shows the temperature, T , in degrees Fahrenheit, for h hours after noon, in City B.

h	1	2	3	4	5	6
T	82	78	75	62	58	59

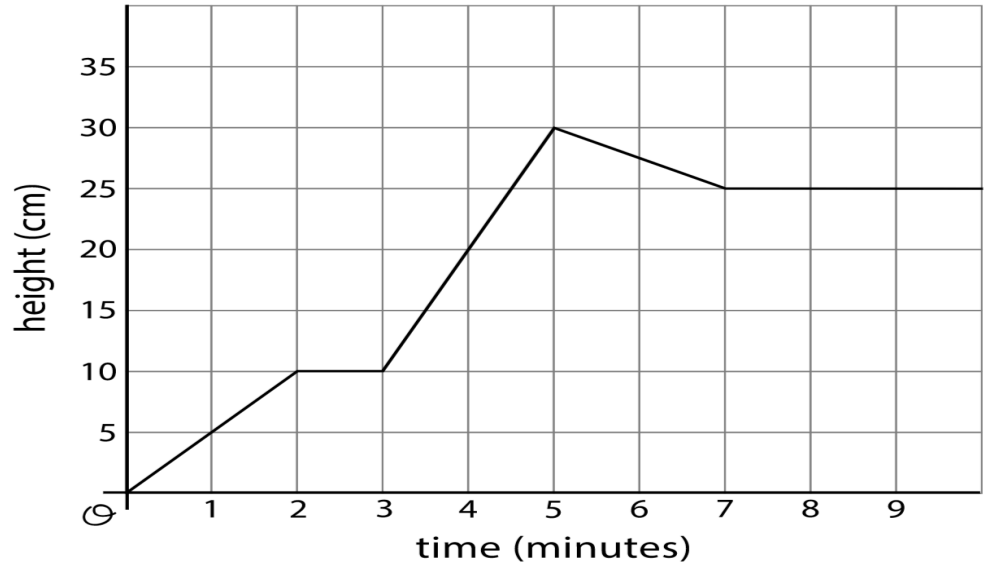
1. Which city was warmer at 4:00 p.m.?
2. Which city had a bigger change in temperature between 1:00 p.m. and 5:00 p.m.?
3. How much greater was the highest recorded temperature in City B than the highest recorded temperature in City A during this time?
4. Compare the outputs of the functions when the input is 3.

Additional Questions:	City A	City B
Change in temperature from 1pm-2pm		
Change in temperature from 2pm-3pm		
Change in temperature from 2pm-3:30pm		n/a
Change in temperature from 3pm-4pm		
Change in temperature from 4pm-5pm		
Change in temperature from 5pm-6pm		
What was the highest temperature (at any time of day)?		

Problem 2

Jada fills her aquarium with water.

The graph shows the height of the water, in cm, in the aquarium as a function of time in minutes. Invent a story of how Jada fills the aquarium that fits the graph.

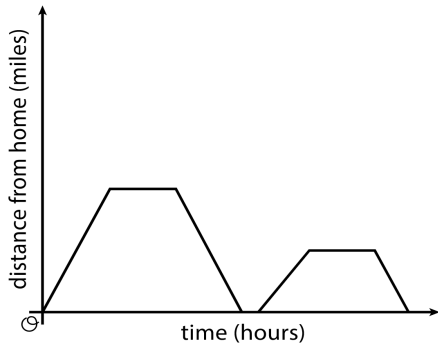


Begin your story below:

Problem 3

Describe what is happening in each phase of the functions shown below:

A



Phase 1: _____

Phase 2: _____

Phase 3: _____

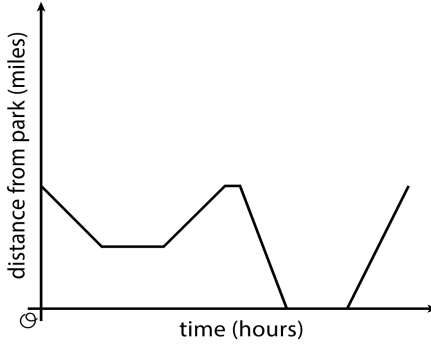
Phase 4: _____

Phase 5: _____

Phase 6: _____

Phase 7: _____

B



Phase 1: _____

Phase 2: _____

Phase 3: _____

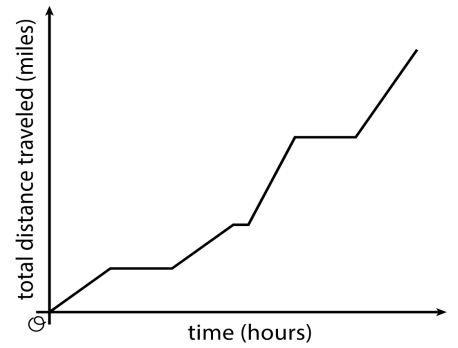
Phase 4: _____

Phase 5: _____

Phase 6: _____

Phase 7: _____

C



Phase 1: _____

Phase 2: _____

Phase 3: _____

Phase 4: _____

Phase 5: _____

Phase 6: _____

Phase 7: _____